

Grua móvel de rodas
Rough Terrain Crane

Marca e Modelo / Make and Model

Link-Belt RTC 8065

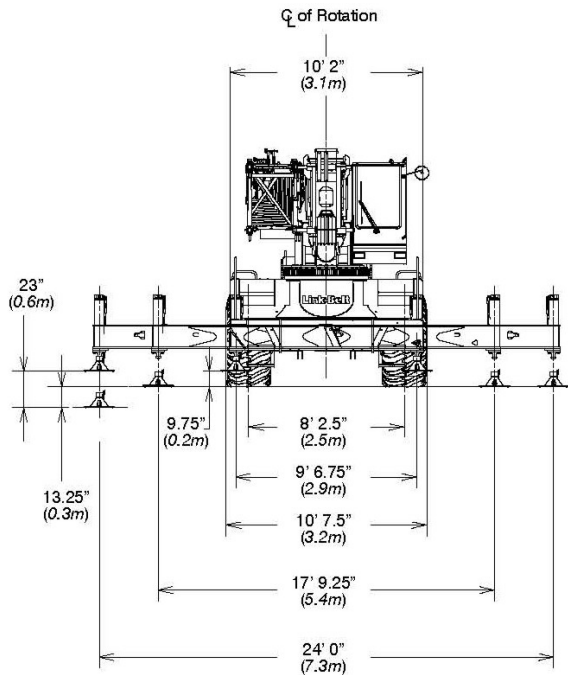
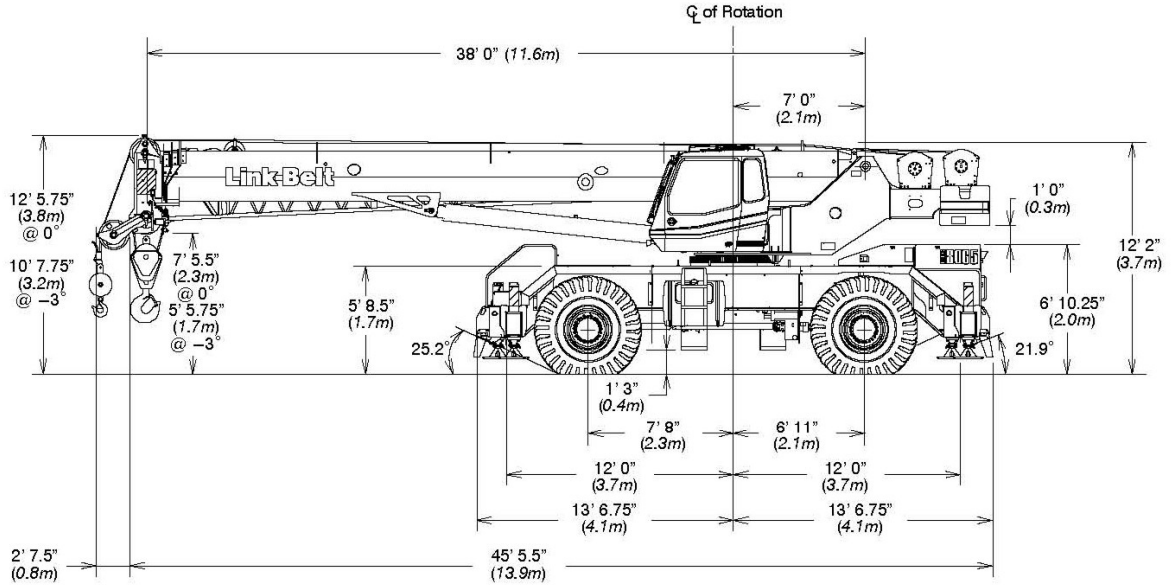
Características técnicas:

Tipo:	Grua hidráulica sobre pneus, tipo RT (rough terrain).
Capacidade máxima:	65 ton.
Tipo de lança:	Telescópica, 11,58 m a 35,05 m de comprimento + 20,42 m jib
Peso operacional:	41.498 kg

Aplicação:

Elevação de cargas.

Grua móvel de rodas
Rough Terrain Crane
Marca e Modelo / Make and Model
Link-Belt RTC 8065



Turning Radius – Front Wheel (4x2) Steering	English	Metric
Wall to wall over carrier	43' 2"	13.2m
Wall to wall over boom attachment	53' 4"	16.3m
Curb to curb	41' 6"	12.6m
Centerline of tire	40' 1"	12.2m

Turning Radius – All Wheel (4x4) Steering	English	Metric
Wall to wall over carrier	26' 6"	8.1m
Wall to wall over boom attachment	38' 1"	11.6m
Curb to curb	24' 10"	7.6m
Centerline of tire	23' 6"	7.2m

Tail Swing	English	Metric
With counterweight	13' 8.25"	4.2m
Without counterweight	N/A	N/A

Not To Scale

