

Grua de Rastos
Crawler Crane

Marca e Modelo / Make and Model

KOBELCO CKE 1100

Características técnicas:

Tipo: Grua hidráulica com rastos extensíveis
Capacidade máxima: 110 ton
Tipo de lança: Trelaçada até 70 m

Aplicação:

Elevação de cargas, baldes de arrasto (dragline), baldes de dragagem, baldes de mandíbulas

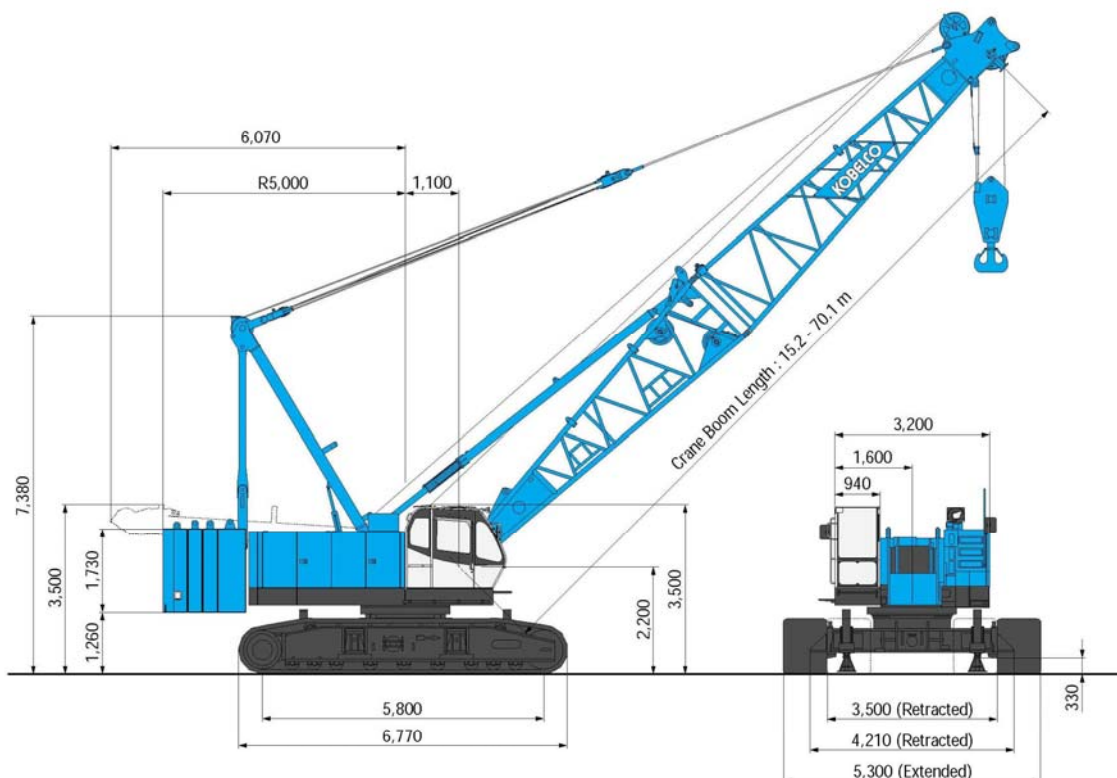
Grua de Rastos
Crawler Crane

Marca e Modelo / Make and Model

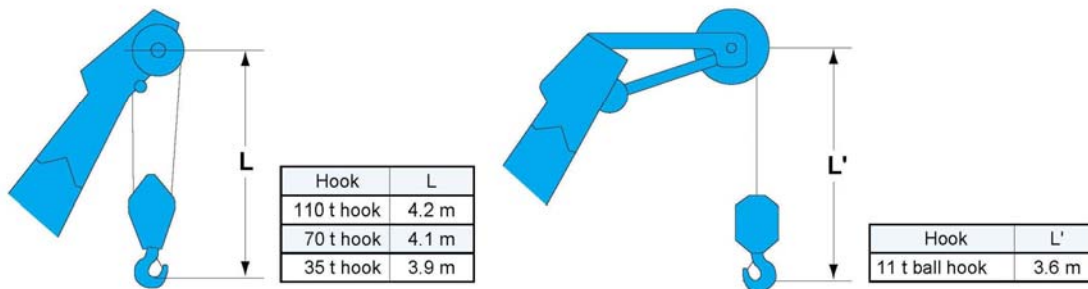
KOBELCO CKE 1100

Crane Boom

(Unit: mm)



Limit of Hook Lifting





N.º de equipamento: 16857

Grua de Rastos
Crawler Crane

Marca e Modelo / Make and Model

KOBELCO CKE 1100

Crane Boom Lifting Capacity

Unit: metric ton

Counterweight: 34.0 t

Working radius (m)	Boom Length (m)												Working radius (m)	
	15.2	18.3	21.3	24.4	27.4	30.5	33.5	36.6	39.6	42.7	45.7	48.8		
3.0	3.6m/11.0*													3.0
4.0	98.6	4.1m/95.3	4.6m/86.0											4.0
5.0	77.7	77.7	77.7	77.0	5.5m/66.0	5.9m/58.9								5.0
6.0	62.2	62.2	62.2	62.2	60.7	58.2	6.4m/52.4	6.8m/47.1						6.0
7.0	53.3	53.2	53.2	53.1	51.2	49.4	47.6	46.0	7.3m/42.7	7.8m/38.9				7.0
8.0	44.5	44.4	44.4	44.2	44.2	42.7	41.4	40.1	38.9	37.7	8.2m/35.6	8.7m/32.9		8.0
9.0	37.6	37.5	37.4	37.3	37.3	37.2	36.5	35.5	34.5	33.5	33.5	32.4	31.7	9.0
10.0	32.5	32.4	32.3	32.2	32.2	32.1	32.0	31.7	30.9	30.1	29.1	28.5		10.0
12.0	25.5	25.3	25.2	25.1	25.1	24.9	24.9	24.8	24.7	24.6	24.0	23.6		12.0
14.0	20.8	20.7	20.6	20.4	20.4	20.3	20.2	20.1	20.0	19.9	19.8	19.7		14.0
16.0	14.4m/20.1	17.4	17.3	17.1	17.1	16.9	16.9	16.7	16.7	16.6	16.4	16.4		16.0
18.0		17.1m/16.0	14.8	14.7	14.6	14.5	14.4	14.3	14.2	14.1	13.9	13.9		18.0
20.0			19.7m/13.2	12.8	12.7	12.6	12.5	12.4	12.3	12.2	12.0	12.0		20.0
22.0				11.3	11.2	11.1	11.0	10.8	10.8	10.6	10.5	10.5		22.0
24.0				22.4m/11.1	10.0	9.8	9.8	9.6	9.5	9.4	9.2	9.2		24.0
26.0					25.0m/9.5	8.8	8.7	8.6	8.5	8.4	8.2	8.2		26.0
28.0						27.6m/8.1	7.9	7.7	7.6	7.5	7.3	7.3		28.0
30.0							7.2	7.0	6.9	6.8	6.6	6.5		30.0
32.0								30.3m/7.1	6.4	6.3	6.1	5.9	5.9	32.0
34.0									32.9m/6.1	5.7	5.6	5.4	5.3	34.0
36.0										35.6m/5.3	5.1	4.9	4.8	36.0
38.0											4.7	4.5	4.4	38.0
40.0										38.2m/4.6	4.1	4.1	4.0	40.0
42.0											40.8m/4.0	3.7		42.0
44.0												43.5m/3.5		44.0
Reeves	10	9	8	7	6	6	5	5	4	4	4	3		Reeves

Working radius (m)	Boom Length (m)							Working radius (m)
	51.8	54.9	57.9	61.0	64.0	67.1	70.1	
9.0	9.1m/30.4	9.6m/28.1						9.0
10.0	27.7	27.0	26.1	10.5m/22.0	10.9m/22.0	11.4m/19.1	11.9m/15.0	10.0
12.0	23.0	22.4	21.7	21.4	20.8	18.4	14.9	12.0
14.0	19.4	18.9	18.4	18.2	17.6	16.5	13.1	14.0
16.0	16.3	16.1	15.8	15.6	15.2	14.8	11.7	16.0
18.0	13.8	13.6	13.5	13.5	13.2	12.8	10.4	18.0
20.0	11.9	11.7	11.6	11.6	11.4	11.3	9.3	20.0
22.0	10.3	10.2	10.0	10.1	9.9	9.8	8.3	22.0
24.0	9.1	8.9	8.8	8.8	8.6	8.5	7.5	24.0
26.0	8.0	7.9	7.7	7.7	7.6	7.5	6.7	26.0
28.0	7.2	7.0	6.9	6.9	6.7	6.6	6.0	28.0
30.0	6.4	6.3	6.1	6.1	6.0	5.8	5.3	30.0
32.0	5.8	5.6	5.5	5.5	5.3	5.2	4.7	32.0
34.0	5.2	5.0	4.9	4.9	4.7	4.6	4.2	34.0
36.0	4.7	4.6	4.4	4.4	4.2	4.1	3.7	36.0
38.0	4.3	4.1	4.0	3.9	3.8	3.6	3.2	38.0
40.0	3.9	3.7	3.5	3.5	3.3	3.2	2.7	40.0
42.0	3.5	3.3	3.2	3.1	2.9	2.8	2.3	42.0
44.0	3.2	3.0	2.8	2.8	2.6	2.4	1.9	44.0
46.0	2.9	2.7	2.5	2.5	2.3	2.1	1.6	46.0
48.0	46.1m/2.9	2.4	2.2	2.2	2.0	1.8		48.0
50.0		48.8m/2.3	2.0	1.9	1.7	1.6		50.0
52.0			51.4m/1.8	1.7	1.5			52.0
54.0				1.5				54.0
Reeves	3	3	3	2	2	2	2	Reeves

Note:

Ratings according to EN13000.

Ratings shown in are determined by the strength of the boom or other structural components.

Refer to notes P8.

*Auxiliary sheave is necessary.

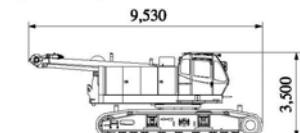
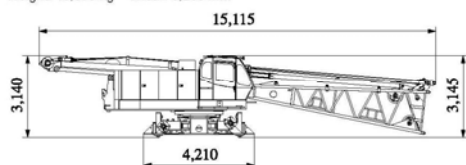


Grua de Rastos
Crawler Crane

Marca e Modelo / Make and Model

KOBELCO CKE 1100

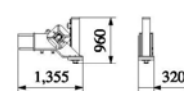
Dimensions: mm Weight: kg

Base MachineWith free fall winch, wire ropes
Weight: 60,070 kg Width: 3,500 mm**Base Machine**With trans-lifter, wire ropes
Weight: 40,670 kg Width: 3,200 mm**Crawler**

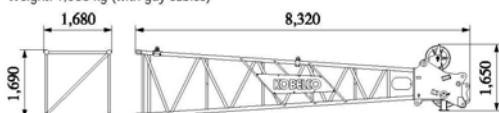
Weight: 11,930 kg

**Translifter (with Float)**

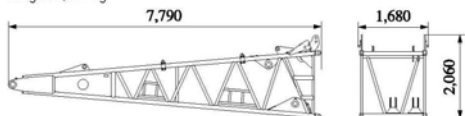
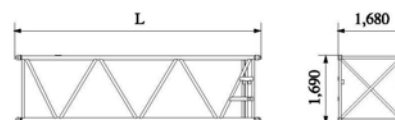
Weight: 430 kg / 1 piece

**Boom Top**

Weight: 1,630 kg (with guy cables)

**Boom Base**

Weight: 2,110 kg

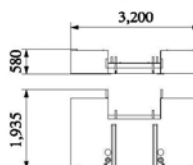
**Insert Boom**

	L (mm)	Weight (kg)*
3.0 m	3,170	455
6.1 m	6,220	760
12.2 m	12,310	1,360

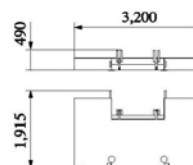
* with guy cables

Counterweight A

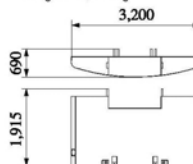
Weight: 10,000 kg

**Counterweight B**

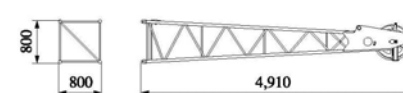
Weight: 7,000 kg x 2 pieces

**Counterweight C**

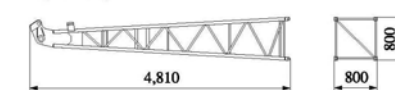
Weight: 10,000 kg

**Jib Top**

Weight: 280 kg

**Jib Base**

Weight: 200 kg

**Other Attachments**

Attachments	Weight	Dimensions (L x W x H)
12.2 m insert boom with lug	1,385 kg (with guy cables)	12,310 mm x 1,675 mm x 1,810 mm
3.0 m insert jib	100 kg	3,115 mm x 800 mm x 800 mm
6.1 m insert jib	180 kg	6,160 mm x 800 mm x 800 mm
Jib strut	250 kg	3,620 mm x 835 mm x 615 mm
Upper spreader	300 kg	1,780 mm x 305 mm x 800 mm
Lower spreader	200 kg	905 mm x 255 mm x 710 mm
110-ton hook block	1,700 kg	710 mm x 700 mm x 1,930 mm
70-ton hook block	900 kg	385 mm x 700 mm x 1,820 mm
35-ton hook block	700 kg	470 mm x 700 mm x 1,575 mm
11-ton ball hook	450 kg	380 mm dia. x 1,200 mm

Note: Estimated weights may vary \pm 2%.