



## Company Profile

[www.seth.pt](http://www.seth.pt)



August 01, 2016





## Corporate Headquarters

Avenida Tomás Ribeiro, No. 145  
2790-467 QUEIJAS  
Portugal

Phone + (351) 219 43 14 79

Fax + (351) 219 43 15 18

URL [www.seth.pt](http://www.seth.pt)

E-mail [seth@seth.pt](mailto:seth@seth.pt)



## Mailing Address

**SETH, SA**  
Avenida Tomás Ribeiro, 145  
2790-467 QUEIJAS  
Portugal

## Maintenance Facilities and Main Warehouse

Rua da Ponte, 2  
2950-422 PALMELA  
Portugal

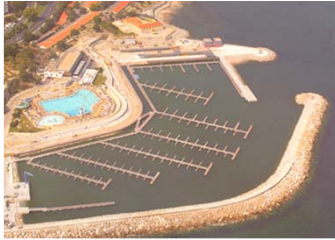
**Main Warehouse**  
**Sandblasting and Paint Shop**  
**Carpentry Shop**  
**Mechanic and Welding Shop**  
**General Archives**

## Portuguese License Construction No. 5

## SETH in brief

- **Founded 1933**
- **Subsidiary company of  
MT Højgaard a/s (Denmark)**





## Quality Management System



Certificado  
Certificate

NÚMERO 2012/CEP-4165  
Number

O Sistema de Gestão da Qualidade de  
The Quality Management System of

**SETH – SOCIEDADE DE EMPREITADAS E TRABALHOS HIDRÁULICOS, S.A.**

**Sede**  
Head Office  
Avenida Tomás Ribeiro, 145  
2790-467 QUELUAS  
PORTUGAL

**Estaleiro Central de Palmela**  
Palmela Central Yard  
Rua da Ponte 2 - Orvidais  
2950-422 SETUBAL  
PORTUGAL

implementado em obras de construção civil, engenharia portuária e costeira, cravação de estacas, trabalhos de hidráulica fluvial e marítima, estações de tratamento de águas e de águas residuais em Portugal e ilhas, cumpre os requisitos da norma  
implemented in the civil works, port and coastal engineering, pile driving, hydraulic works and river sea, water treatment plants and wastewater in Portugal and islands, meets the requirements of the standard

NP EN ISO 9001:2008



*José Leitão*  
José Leitão  
CEO

Emitido em 2018-01-25  
Date of issue  
Válido até 2018-09-15  
Valid until

APCER – Associação Portuguesa de Certificação  
Edifício de Serviços da Equipar, 2ª andar, Av. Dr. António Mendes  
4800-827 Lagoa de Palmela  
www.apcer.com



## CERTIFICATE

IQNet and

APCER

hereby certify that the organization

**SETH – SOCIEDADE DE EMPREITADAS E TRABALHOS HIDRÁULICOS, S.A.**

**Head Office**  
Avenida Tomás Ribeiro, 145  
2790-467 QUELUAS - PORTUGAL

**Palmela Central Yard**  
Rua da Ponte 2 - Orvidais  
2950-422 SETUBAL - PORTUGAL

for the following field of activities

civil works, port and coastal engineering, pile driving, hydraulic works and river sea, water treatment plants and wastewater in Portugal and islands

has implemented and maintains a

Quality Management System

Which fulfils the requirements of the following standard

ISO 9001:2008

Issued on: 2018-01-25

Validity date: 2018-09-15

Registration Number: PT- 2012/CEP. 4165



*Michael Drechsel*  
Michael Drechsel  
President of IQNet

*José Leitão*  
José Leitão  
APCER CEO



Any additional clarification concerning the scope of this certificate may be obtained by consulting APCER.

IQNet Partners\*:

ABNOR Spain APNOR Certification France AIB-Vincotte International Belgium ANCE-SIGE Mexico APCER Portugal CCC Cyprus  
CISQ Italy CQC China CQM China CQS Czech Republic Cro Cert Croatia DQS Holding GmbH Germany  
PCAV Brazil FONDOFORMA Venezuela ICONFEC Colombia INEC Mexico Inspecta Certification Finland IRAM Argentina  
JQA Japan KPO Korea MIRTEC Greece MSZT Hungary Nemko AS Norway NSAI Ireland PCBC Poland  
Quality Austria Austria RR Russia SII Israel SIQ Slovenia SIRM QAS International Malaysia  
SQS Switzerland SRIAC Romania TEST St. Petersburg Russia TSE Turkey VUKOS Serbia  
IQNet is represented in the USA by: APNOR Certification, CISQ, DQS Holding GmbH and NSAI Inc.  
\*The list of IQNet partners is valid at the time of issue of this certificate. Updated information is available under www.iqnet-certification.com





## Environmental Management System



Certificado  
Certificate

NÚMERO 2009/AMB.0420  
Number

O Sistema de Gestão Ambiental da  
The Environmental Management System of

**SETH – SOCIEDADE DE EMPREITADAS E TRABALHOS HIDRÁULICOS, S.A.**

**Sede**  
Head Office  
Avenida Tomás Ribeiro, 145  
2790-467 QUEIJAS  
PORTUGAL

**Estaleiro Central de Palmela**  
Palmeira Central Yard  
Rua da Ponte, 2, Orvidais – Palmela  
2950-422 SETÚBAL  
PORTUGAL

implementado na coordenação e execução de obras de construção civil e públicas, designadamente para obras de proteção costeira, portuárias, hidráulicas, gasodutos, estruturas de betão e metálicas e cravação de estacas em Portugal e ilhas, cumpre os requisitos da norma  
implemented in the coordination and execution of civil construction and public works, particularly for coastal protection works, port, water, pipelines, concrete and metal structures and pile-driving in Portugal and islands, meets the requirements of the standard

NP EN ISO 14001:2012



*João Leitão*  
CEO

Emissão em 2015-09-01  
Date of issue  
Válida até 2018-08-31  
valid until

APCER - Associação Portuguesa de Certificação  
Edifício de Serviços da Expocem, 29 Andar, Av. Dr. António Mesquita  
850-637 Lagoa de Palmela  
www.apcer.pt



THE INTERNATIONAL CERTIFICATION NETWORK

# CERTIFICATE

IQNet and  
APCER

hereby certify that the organization

**SETH – SOCIEDADE DE EMPREITADAS E TRABALHOS HIDRÁULICOS, S.A.**

**Head Office**  
Avenida Tomás Ribeiro, 145  
2790-467 QUEIJAS  
PORTUGAL

**Palmela Central Yard**  
Rua da Ponte, 2, Orvidais – Palmela  
2950-422 SETÚBAL  
PORTUGAL

for the following field of activities

Coordination and execution of civil construction and public works, particularly for coastal protection works, port, water, pipelines, concrete and metal structures and pile-driving in Portugal and Islands

has implemented and maintains a

**Environmental Management System**

Which fulfils the requirements of the following standard

**ISO 14001:2004**

Issued on: 2015-09-01  
Validity date: 2018-08-31

Registration Number: PT- 2009/AMB.0420



*Michael Drechsel*  
Michael Drechsel  
President of IQNet

*João Leitão*  
José Leitão  
APCER CEO



Any additional clarification concerning the scope of this certificate may be obtained by consulting APCER.

IQNet Partners\*:

AENOR Spain AFNOR Certification France AIB-Vincotte International Belgium ANCE-SIGE Mexico APCER Portugal CCC Cyprus  
CISQ Italy CQC China CQM China CQS Czech Republic Cro Cert Croatia DQS Holding GmbH Germany  
FCAV Brazil FONDONORMA Venezuela ICONTEC Colombia IMC Mexico Inspira Certification Finland IRAM Argentina  
JQA Japan KFQ Korea MIRTEC Greece MSZT Hungary Nemko AS Norway NSAI Ireland PCBC Poland  
Quality Austria Austria RR Russia SII Israel SIQ Slovenia SIRIM QAS International Malaysia  
SQS Switzerland SRAC Romania TEST St Petersburg Russia TSE Turkey YUQS Serbia  
IQNet is represented in the USA by: APNOR Certification, CISQ, DQS Holding GmbH and NSAI Inc.

\* The list of IQNet partners is valid at the time of issue of this certificate. Updated information is available under [www.iqnet-certification.com](http://www.iqnet-certification.com)





# Occupational Health and Safety Management System



Certificado  
Certificate

NÚMERO 2008/SST.0177  
Number

O Sistema de Gestão da Segurança e Saúde do Trabalho da  
The Occupational Health and Safety Management System of

**SETH – SOCIEDADE DE EMPREITADAS E TRABALHOS HIDRÁULICOS, S.A.**

Sede  
Rua da Ponte, 2, Orvidais – Palmela  
2790-467 QUEIJAS  
PORTUGAL

Estaleiro Central de Palmela  
Rua da Ponte, 2, Orvidais – Palmela  
2950-422 SETÚBAL  
PORTUGAL

Implementado na coordenação e execução de obras de construção civil e públicas, designadamente para obras de proteção costeira, portuárias, hidráulicas, gasodutos, estruturas de betão e metálicas e cravação de estacas em Portugal e ilhas, cumpre os requisitos da norma  
Implemented in the coordination and execution of civil construction and public works, particularly for coastal protection works, port, water, pipelines, concrete and metal structures and pile-driving in Portugal and islands, meets the requirements of the standard

OHSAS 18001:2007 / NP 4397:2008



*José Leitão*  
José Leitão  
CEO

Emitido em 2015-09-11  
Date of issue  
Válido até 2018-09-10  
Valid until

APCER – Associação Portuguesa de Certificação  
Edifício de Serviços de Engenharia, 2º Andar, Av. Dr. António Mesquita  
4400-421 Lagoa de Palmela  
www.apcer.pt



THE INTERNATIONAL CERTIFICATION NETWORK

## CERTIFICATE

IQNet and  
APCER

hereby certify that the organization

**SETH – SOCIEDADE DE EMPREITADAS E TRABALHOS HIDRÁULICOS, S.A.**

Head Office  
Avenida Tomás Ribeiro, 145  
2790-467 QUEIJAS  
PORTUGAL

Palmela Central Yard  
Rua da Ponte, 2, Orvidais – Palmela  
2950-422 SETÚBAL  
PORTUGAL

for the following field of activities

Coordination and execution of civil construction and public works, particularly for coastal protection works, port, water, pipelines, concrete and metal structures and pile-driving in Portugal and Islands

has implemented and maintains a

**Occupational Health and Safety Management System**

Which fulfils the requirements of the following standard

**OHSAS 18001:2007**

Issued on: 2015-09-11  
Validity date: 2018-09-10

Registration Number: PT- 2008/SST.0177



*Michael Drechsel*  
Michael Drechsel  
President of IQNet

*José Leitão*  
José Leitão  
APCER CEO



Any additional clarification concerning the scope of this certificate may be obtained by consulting APCER.

IQNet Partners\*:

AENOR Spain AFNOR Certification France AIB-Vinçotte International Belgium ANCE-SIGE Mexico APCER Portugal CCC Cyprus  
CISQ Italy CQC China CQM China CQS Czech Republic Cro Cert Croatia DQS Holding GmbH Germany  
PCAV Brazil FONDONORMA Venezuela ICONTEC Colombia BANC Mexico Inspecia Certification Finland IRAM Argentina  
JQA Japan KQF Korea MIRTEC Greece MSZT Hungary Nemko AS Norway NSAI Ireland PCBC Poland  
Quality Austria Austria RR Russia SII Israel SIQ Slovenia SIRIM QAS International Malaysia  
SQS Switzerland SRAC Romania TEST St Petersburg Russia TSE Turkey YUQS Serbia  
IQNet is represented in the USA by: APQR Certification, CISQ, DQS Holding GmbH and NSAI Inc.

\* The list of IQNet partners is valid at the time of issue of this certificate. Updated information is available under www.iqnet-certification.com





**MTH Headquarters**



**Offshore Wind Turbines  
Denmark**



**Linpro a/s  
From HV lines  
to LAN networks**



**Farøbroen Bridge  
Denmark**

## Group Headquarters

MT Højgaard a/s  
Knud Højgaards Vej 9  
DK-2860 Søborg  
Denmark

Tel: +45 3954 4000  
Fax: +45 3954 4900  
E-mail: [info@mthojgaard.dk](mailto:info@mthojgaard.dk)  
URL: [www.mthojgaard.dk](http://www.mthojgaard.dk)



On May, 2nd, 2001, Højgaard & Schultz a/s (founded 1918) and Monberg & Thorson a/s (founded 1919) have merged. The new company, designated MT Højgaard a/s, ranks among the top 30 European construction firms. For more information, please visit MTH's corporate website at <http://www.mthojgaard.com>.

## Our reference shareholder, MT Højgaard a/s, in brief

- **Leading construction company in Denmark**
- **Turnover: 938 EUR million (2014)**
- **Assets: 490 EUR million (2014)**





**The Öresund Link**  
(between Denmark and Sweden)  
built by Sundlink Contractors, in  
which MT Højgaard a/s  
participated with a 37% share



**Ferry Terminal**  
Copenhagen Harbour



**Temporary buildings**  
made by Scandi Byg a/s



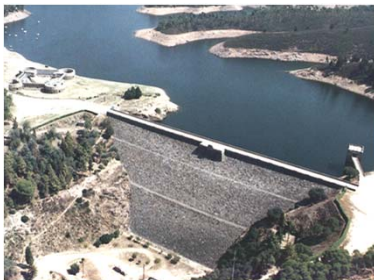
# Overview of the Group Diagram

2016





**The “Vala Nova” Bridge**  
The first pre-stressed concrete  
bridge in Portugal  
Built by SETH in 1954



**Pego do Altar Dam**  
Built by SETH in 1949



**Vale do Gaio Dam**  
Built by SETH in 1949



**Marechal Carmona Bridge**  
Built by SETH in 1951

## SETH's Milestones

- 1933** Foundation of SETH
- 1934** Construction of Setúbal Harbour
- 1938** Construction of Funchal Harbour
- 1951** Construction of Marechal Carmona bridge (Vila Franca de Xira)
- 1960** Activity started in Angola
- 1963** Activity started at Lajes Air Base (Azores)
- 1984** Secil - Setúbal - Forno IX
- 1987** Activity started in the Caribbean (U.S. Navy / U.S. Air Force) (until 1991)
- 1991** Start of activity of the Pile Driving Department
- 1996** Ownership opened to Portuguese stockholders
- 2000** Activity started in Mozambique
- 2003** Legal regime conversion to “public company”
- 2005** GMP – *Groupe Maritime Portugais* was formed
- 2006** Activity started in Spain
- 2007** Start activity in Guinea (Conakry) and Algeria
- 2009** Foundation of SethAngola, SA (Angola)
- 2010** Start activity in Cape Verde
- 2012** Foundation of SethMoz, SA (Mozambique)
- 2013** 80<sup>th</sup> Anniversary







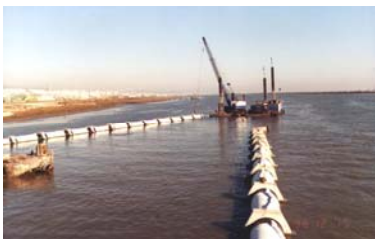
**Jack-up platform "Valeira"  
Marine pile driving**



**Core-Loc® - 32 Ton  
Praia da Vitória Military Harbor**



**Electricity III, Inhambane  
Mozambique**



**Marine works  
Water intake, Valorsul**



**Coferdam (sheet piling)  
HDD Works for Sines-Setúbal Pipeline**

## SETH's Specialties

### Marine Works

- Ports
- Marinas
- Shore Protection Structures

### Transmission and Distribution Lines

### Civil Works

- Building and Industrial Construction
- Concrete and Special Formwork
- Design-Build
- WWTP, WTP
- Marine Outfall
- Gas, Oil and Fuel Pipelines
- Irrigation / River Engineering

### Pile Foundation

- Pile
- Sheet Pile
- Micro-Piles

## Job Management



- Job management and turn-key jobs
- Feasibility studies
- Legal counseling
- Licensing
- Scheduling and resource management
- National and international procurement

## Engineering



- Designers Selection
- Detail Engineering
- Drawings and Specifications Approval
- Technical Consulting Services
- Value Engineering

## Labor



- Labor Management
- Labor Selection and Recruitment
- Subcontractors Selection and Management
- Labor Operation Control

## Equipment

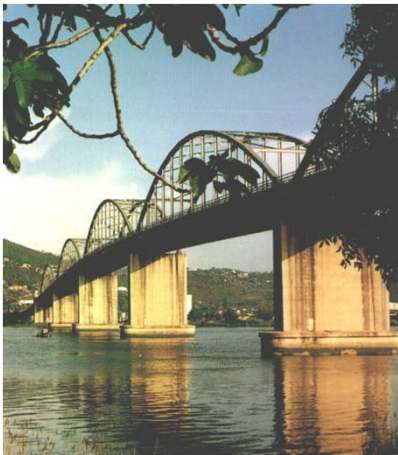
- Operator Recruiting
- Supply
- Local and International Leasing
- Operational Management



**32 T Core-Loc®**  
**Praia da Vitória Harbour Breakwater**  
**Largest in the world**



**Sines-Setúbal Gas Pipeline**  
**HDD Works at Sado River Crossing**  
**Pull-Back Operations**



**Marechal Carmona Bridge**  
**Vila Franca de Xira, Portugal**  
**Built by SETH in 1951**



# Work Portfolio